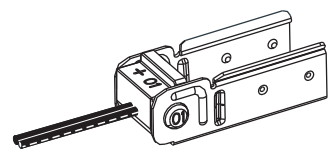


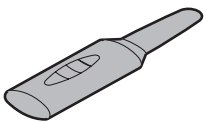
## FXN 1617 | FLEXIBLE NEON

### SWIVEL FRONT CONNECTOR

#### Components



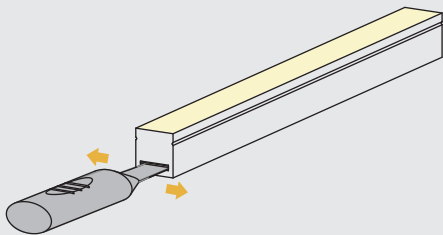
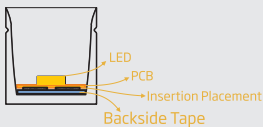
Feed Connector (1pc)  
[U Steel Plate (1pc)]



Inducer

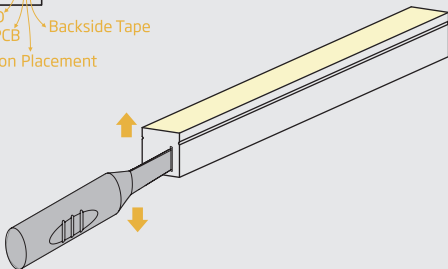
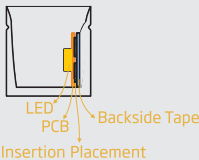
#### Installation Instructions

##### Step 1 (VB)



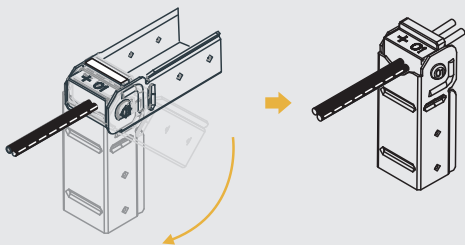
Insert the inducer into the BACKSIDE of PCB and move gently to create a small cavity.

##### Step 1 (HB)



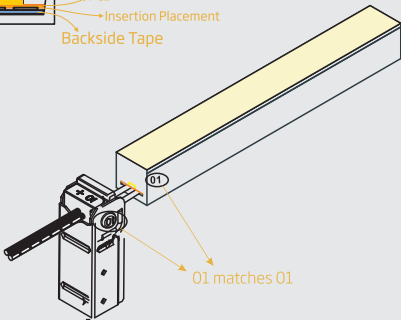
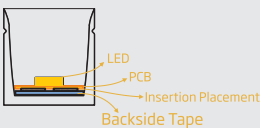
Insert the inducer into the BACKSIDE of PCB and move up and down gently to create a small cavity.

##### Step 2



Rotate the U steel plate downwards to make the pins of feed connector exposed completely.

##### Step 3 (VB)



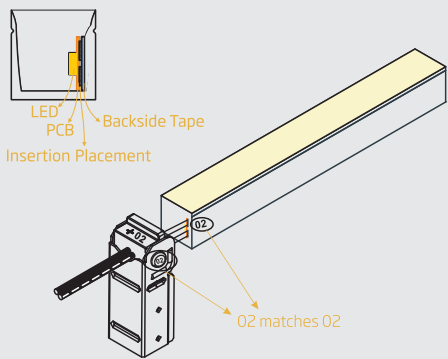
Insert the pins of feed connector into the space the inducer created (backside of PCB).

## FXN 1617 | FLEXIBLE NEON

### SWIVEL FRONT CONNECTOR

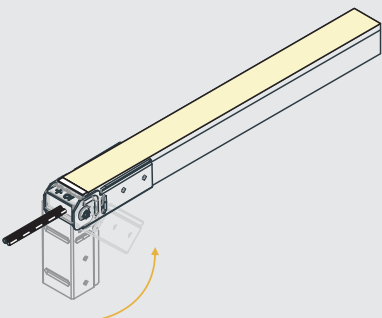
#### Installation Instructions

Step 3 (HB)



Insert the pins of feed connector into the space the inducer created (backside of PCB).

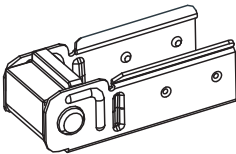
Step 4



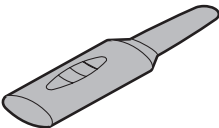
Rotate back till the light seats into the steel plate tightly.

## SWIVEL END CAP

### Components



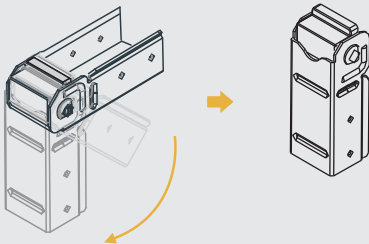
Tail Plug (1pc)  
[U Steel Plate (1pc)]



Inducer

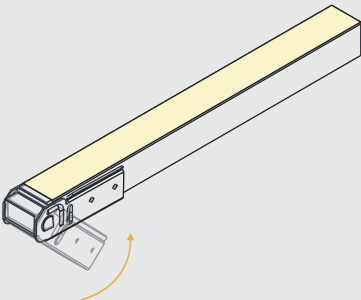
### Installation Instructions

Step 1



Rotate the U steel plate downwards.

Step 2



Put the light end and end cap together and rotate the steel plate back till the light seats into it tightly.